

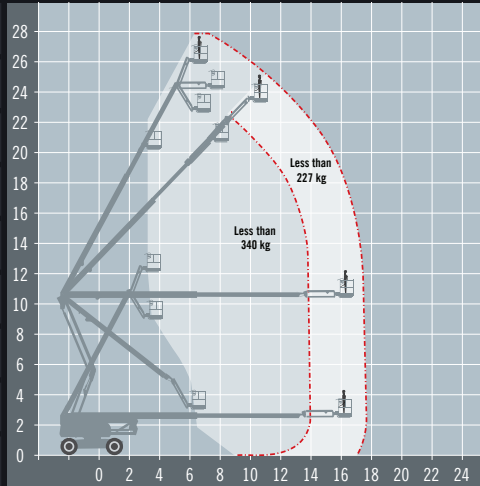
# SKYJACK SJ85+

ALTERNATIVES: JLG 800AJ, Genie Z80/60



## Articulated boom with extra lift capacity

|                  |                |
|------------------|----------------|
| REACH HEIGHT     | 27.91 m        |
| PLATFORM HEIGHT  | 25.91 m        |
| UP AND OVER      | 10.36 m        |
| HORIZONTAL REACH | 17.07 m        |
| STOWED HEIGHT    | 2.67 m         |
| LENGTH X WIDTH*  | 11.63 x 2.49 m |
| PLATFORM SIZE    | 1.83 x 0.91 m  |
| WEIGHT           | 16,965 kg      |
| LIFT CAPACITY    | 227/340 kg     |



\*Length and width shown are when stowed.

- DIESEL POWERED**  
Perfect for external applications
- OUTDOOR RATED**  
Wind rated for outdoor use
- ROUGH TERRAIN**  
4 wheel drive for uneven ground
- EXTRA LIFT CAPACITY**  
Carry more personnel/equipment
- IPAF 3b**  
Requires IPAF category 3b

The Skyjack SJ85+ boasts all of the same benefits found on the SJ63 AJ; stowed compact dimensions, minimal tailswing, optimized reach and true vertical rise. Skyjack's riser and boom geometry will allow operators to go from the ground to max height in approximately 60 seconds and with the addition of a dual capacity rating the SJ85+ gives you the lift capacity to get the job done.

## A range of extra's for 'Hire or Purchase' designed to give you the GTAdvantage™

- STOP NUISANCE BORROWING WITH GTA SECURE™**
- PROTECT SENSITIVE GROUND WITH 'GROUND GUARDS'**
- DOUBLE POINT HARNESSES TO KEEP YOU SAFE AT HEIGHT**
- PROTECT FINISHED SURFACES WITH WHEEL COVERS'**
- REFUEL ON-SITE THE EASY WAY WITH A FUEL BOX!**
- OPERATOR TRAINING FOR THIS ACCESS PLATFORM**

Find out more about the 'GTAdvantage' extras at [gtaccess.co.uk](http://gtaccess.co.uk)

